

HOIST RINGS

2



Swivel Hoist Rings



Forged Swivel Hoist Rings



Heavy-Duty® Swivel Hoist Rings



Side-Pull Hoist Rings



Pivoting Hoist Rings



Lifting Eyes



Hoist Eye 360°



Hoist Ring Accessories

Also see:



Lifting Pins
p. 55-56

HOIST RINGS

SELECTION CHART:

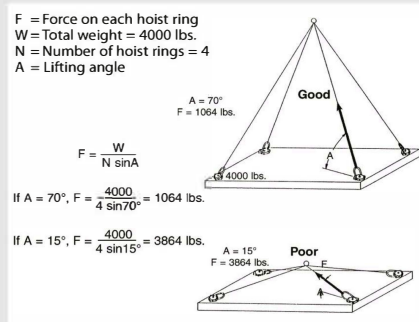
| CAPACITY | SWIVEL | | | SIDE-PULL | PIVOTING | LIFTING EYES | HOISTEYE 360° |
|--------------------|--------|-----------|--------|-----------|----------|--------------|---------------|
| | STEEL | STAINLESS | NICKEL | | | | |
| < 500 LBS | X | X | | | | X | |
| 500-999 LBS. | X | | X | X | | X | X |
| 1,000-2,499 LBS. | X | X | X | X | X | X | X |
| 2,500-4,999 LBS. | X | X | X | X | X | X | X |
| 5,000-7,499 LBS. | X | X | | X | X | X | X |
| 7,500-9,999 LBS. | X | X | | X | X | X | |
| 10,000-24,999 LBS. | X | X | | X | X | X | |
| >25,000 LBS. | X | X | | | | | |

2

HOIST RING SAFETY PRECAUTIONS

INFO+: The following safety precautions apply to all lifting devices on pages 72, 74-87 and page 55. Also see these individual pages for additional precautions and installation guidelines.

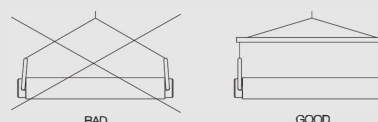
1. **IMPORTANT!** The load on each hoist ring is not simply total weight divided by the number of hoist rings. The resultant force can be significantly greater at shallow lift angles and with unevenly distributed loads. See the example below:



2. Despite the 5:1 safety factor on hoist rings, never exceed the rated load capacity. This safety margin is needed in case of misuse, which could drastically lower load capacity.

3. Tensile strength of parent material should be above 80,000 psi to achieve full load rating. For weaker material, consider through-hole mounting with a nut and washer on the other side.

4. Do not allow hoist rings to bind. Use a spreader bar, if necessary, to avoid binding.



5. Do not use spacers between the hoist ring and the mounting surface.

6. Mounting surface must be flat and smooth for full contact under hoist ring. Tapped mounting holes must be perpendicular to the mounting surface.

7. Tighten mounting screws to the torque recommended. Periodically check torque because screws could loosen in extended service. For hoist rings not furnished with screws, mount using only high-quality socket-head cap screws.

8. Never lift with a hook or other device that could deform the lifting ring.

9. Do not apply shock loads. Always lift gradually. Repeat magnaflux testing if shock loading ever occurs.

10. After installation, check that ring rotates and pivots freely in all directions.

HOIST RINGS

TYPES

2



SWIVEL HOIST RINGS

The original, patented safety-engineered Hoist Ring, and the only one that has a production sample destructively pull tested to guarantee each production run meets or exceeds the 5:1 safety factor. Pivots 180 degrees and swivels 360 degrees simultaneously to allow lifting from any direction. Black oxide finish is standard, with cadmium plating available as a special. Also available in 300-series stainless steel, with a load rating equal to 50% of the steel version. Heavy duty versions are available in capacities up to 250,000 lbs. Some varieties available electroless nickel plated, for a less-hazardous corrosion-resistant finish. Made in USA. **INFO+:** Pages 74-82.



FORGED SWIVEL HOIST RINGS

Carr Lane's Forged Swivel Hoist Rings feature a forged lifting ring and simpler construction for easy disassembly. Swivel Hoist Rings pivot 180° and swivel 360° simultaneously to allow lifting from any direction. Available with inch or metric threads in load capacities up to 10,000 lbs, many with a choice of bolt length. Complies with ASME B30.26. **INFO+:** Pages 79-80.



HEAVY DUTY® SWIVEL HOIST RINGS

Heavy-Duty® Swivel Hoist Rings feature a forged lifting ring and simpler construction for easy disassembly. Swivel Hoist Rings pivot 180° and swivel 360° simultaneously to allow lifting from any direction. Available with inch or metric threads in load capacities up to 30,000 lbs, many with a choice of bolt length. Sizes up to 10,000 lbs capacity are optionally available with a long ring, which provides extra reach and allows using larger lifting hooks. Complies with ASME B30.26, CEN/TC 168 Reference EN 1677-1: 2000 Part 1 and 2006/42/EC. **INFO+:** Pages 80



SIDE-PULL HOIST RINGS

Required for side mounting. Flip and turn loads without unhooking (use with a spreader bar). Forged alloy-steel ring pivots 180 degrees and swivels 360 degrees simultaneously to allow lifting from any direction. Large, weldless forged ring can accommodate larger lifting hooks. Meets OSHA standards and military specifications MIL-STD-209J and MIL-STD-1365(11). Safety factor = 5:1. Made in USA. **INFO+:** Pages 83-84.



PIVOTING HOIST RINGS

An economical lifting device ideal for permanent installation. Also has a low profile and high load capacity. Forged base and solid-loop forged ring. Pivots a full 180 degrees, but does not rotate. Safety factor = 5:1. Made in USA. **INFO+:** Page 85.



LIFTING EYES

Forged steel eyebolts with an integral shoulder for greater strength. These simple, economical products are suitable for vertical lifting in-line with the threaded bolt, such as when lifting from a single point or from two points with a spreader bar. For lifting at an angle, Swivel Hoist Rings should be used instead. Manufactured and tested according to ASTM A489 and ANSI B18.15 specifications. Safety factor = 5:1. Made in USA. **INFO+:** Page 86.



HOIST EYE 360°

Hoist Eye 360° is a forged lifting eye that can be rotated 360° after installation, to align with the pulling direction. This compact assembly features a specially designed shoulder bolt, which rotates freely in the precisely machined lifting-eye body and is held captive by a retaining ring. Unlike conventional lifting eyes, Hoist Eye 360° can be used at full rated load capacity when pulling at any angle 0 to 90° from the bolt axis. Safety factor = 5:1. Made in USA. **INFO+:** Page 87.

HOIST RINGS

AVAILABLE EXCLUSIVELY ONLINE AT WWW.CARRLANE.COM

The following hoist ring selections may be found online in the product catalog at carrlane.com

2



FORGED ROAD-PLATE SWIVEL HOIST RINGS*

These hoist rings have a shorter, larger-diameter bolt, ideal for lifting heavy plates. **Patent no. 4,570,987, no. 4,641,986, no. 5,405,210** and others pending.



FORGED WELD-MOUNT SWIVEL HOIST RINGS*

These hoist rings mounted by welding. **Patent no. 4,570,987, no. 4,641,986, no. 5,405,210** and others pending.



HEAVY-DUTY SUPER-COIL™ SWIVEL HOIST RINGS*

These hoist rings are furnished with a coil bolt, and are ideal for temporary attachment to steel structures and construction material. **Patent no. 4,570,987, 4,641,986, 5,405,210, 5,732,991**, and others pending.



FORGED SWIVEL LIFT PLATES

These swivel hoist rings have a center through-hole instead of a bolt, for mounting with a custom anchoring system. **Patent no. 4,570,987, no. 4,641,986, no. 5,405,210** and others pending.



SHACKLE HOIST RINGS*

These swivel hoist rings are designed for permanent mounting on tooling and equipment. Forged alloy-steel shackle pivots 180 degrees and swivels 360 degrees simultaneously to allow lifting from any direction. **Patent no. 5,823,588**.



FAST-LOK™ PLATE LIFTING SYSTEM

Plate-lifting system with a weld-on base and totally removable shackle assembly, allowing the plate surface to remain totally free of obstructions. Patent pending. **FEATURES:** Fast-Lok™ Clevis, Fast-Lok™ Base, Forged Anchor Shackle, Fast-Lok™ Detent Pin.



SCISSOR-LOK™ PLATE LIFTING SYSTEM

Plate-lifting system with a weld-on base and totally removable shackle assembly, allowing the plate surface to remain total free of obstructions. Patent pending. **FEATURES:** Scissor-Lok™ Tool, Fast-Lok™ Base, Forged Anchor Shackle, and Fast-Lok™ Detent Pin.

HOIST RING ACCESSORIES — AVAILABLE EXCLUSIVELY ONLINE:



RENEWAL ROAD PLATES ROUND



RENEWAL ROAD PLATES SQUARE

*Forged alloy-steel shackle pivots 180 degrees and swivels 360 degrees simultaneously to allow lifting from any direction.

SWIVEL HOIST RINGS

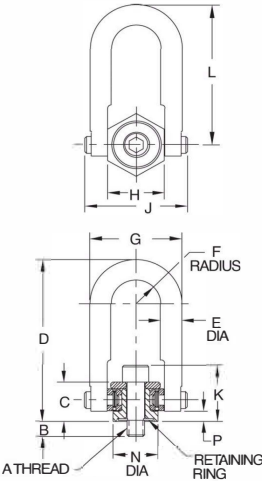
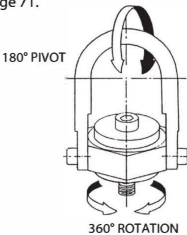
ALLOY STEEL, HEAT TREATED, BLACK OXIDE FINISH, 100% MAGNAFLUX INSPECTED

2



The original safety-engineered hoist ring. Pivots 180 degrees and swivels 360 degrees simultaneously to allow lifting from any direction. Safety factor = 5:1. Black oxide finish is standard, with cadmium plating available as a special (add -C to part number). Swivel Hoist Rings are also available in 300-series stainless steel, with a load rating equal to 50% of the steel version. Patent no. 3,297,293 and 4,705,422.

Fasten hoist rings using the installation torque specified in the dimension table. Always install so that the hoist ring can pivot and swivel freely. Some hoist rings are available with a choice of bolt lengths. Use the shortest bolt length only for steel plates, the other lengths for weaker materials and for through-hole mounting with a washer and nut. INFO+: See general Hoist Ring Safety Precautions on page 71.



STANDARD RING (INCH)

| PART NO. | LOAD RATING (LBS) | A | B | C | D | E DIA | F | G | H | J | K | L | N DIA | P | INSTALLATION TORQUE (FT-LBS) | REPLACEMENT BOLT (WITH RETAINING RING) |
|----------------|-------------------|---------|------|------|------|--------|------|------|------|------|------|------|-------|-----|------------------------------|--|
| CL-550-SHR-2 | 550 | 1/4-20 | .54 | .71 | 2.67 | 3/8 | .43 | 1.61 | 1.00 | 1.84 | .96 | 2.31 | .75 | .17 | 5 | CL-800-SHRB-1 |
| CL-800-SHR-1 | 800 | 5/16-18 | .29 | .72 | 2.63 | 3/8 | .44 | 1.62 | 1.00 | 1.82 | 1.03 | 2.35 | .75 | .17 | 7 | CL-800-SHRB-2 |
| CL-800-SHR-2 | 800 | 5/16-18 | .54 | .72 | 2.63 | 3/8 | .44 | 1.62 | 1.00 | 1.82 | 1.09 | 2.35 | .75 | .17 | 12 | CL-1000-SHRB-1 |
| CL-1000-SHR-1 | 1000 | 3/8-16 | .54 | .72 | 2.63 | 3/8 | .44 | 1.62 | 1.00 | 1.82 | 1.09 | 2.35 | .75 | .17 | 12 | CL-1000-SHRB-2 |
| CL-2500-SHR-1 | 2500 | 1/2-13 | .77 | 1.23 | 4.77 | 3/4 | .88 | 3.25 | 2.00 | 3.52 | 1.73 | 4.24 | 1.50 | .16 | 28 | CL-2500-SHRB-1 |
| CL-2500-SHR-2 | 2500 | 1/2-13 | 1.02 | 1.23 | 4.77 | 3/4 | .88 | 3.25 | 2.00 | 3.52 | 1.73 | 4.24 | 1.50 | .16 | 28 | CL-2500-SHRB-2 |
| CL-2500-SHR-3 | 2500 | 1/2-13 | 1.27 | 1.23 | 4.77 | 3/4 | .88 | 3.25 | 2.00 | 3.52 | 1.73 | 4.24 | 1.50 | .16 | 28 | CL-2500-SHRB-3 |
| CL-4000-SHR-1 | 4000 | 5/8-11 | .77 | 1.23 | 4.77 | 3/4 | .88 | 3.25 | 2.00 | 3.52 | 1.86 | 4.24 | 1.50 | .16 | 60 | CL-4000-SHRB-1 |
| CL-4000-SHR-2 | 4000 | 5/8-11 | 1.02 | 1.23 | 4.77 | 3/4 | .88 | 3.25 | 2.00 | 3.52 | 1.86 | 4.24 | 1.50 | .16 | 60 | CL-4000-SHRB-2 |
| CL-4000-SHR-3 | 4000 | 5/8-11 | 1.27 | 1.23 | 4.77 | 3/4 | .88 | 3.25 | 2.00 | 3.52 | 1.86 | 4.24 | 1.50 | .16 | 60 | CL-4000-SHRB-3 |
| CL-5000-SHR-1 | 5000 | 3/4-10 | 1.02 | 1.23 | 4.77 | 3/4 | .88 | 3.25 | 2.00 | 3.52 | 1.98 | 4.24 | 1.50 | .16 | 100 | CL-5000-SHRB-1 |
| CL-5000-SHR-2 | 5000 | 3/4-10 | 1.52 | 1.23 | 4.77 | 3/4 | .88 | 3.25 | 2.00 | 3.52 | 1.98 | 4.24 | 1.50 | .16 | 100 | CL-5000-SHRB-2 |
| CL-7000-SHR-1 | 7000 | 3/4-10 | 1.03 | 1.72 | 6.55 | 1-1/16 | 1.40 | 4.94 | 3.00 | 5.06 | 2.47 | 5.80 | 2.37 | .24 | 100 | CL-7000-SHRB-1 |
| CL-7000-SHR-2 | 7000 | 3/4-10 | 1.53 | 1.72 | 6.55 | 1-1/16 | 1.40 | 4.94 | 3.00 | 5.06 | 2.47 | 5.80 | 2.37 | .24 | 100 | CL-7000-SHRB-2 |
| CL-8000-SHR-1 | 8000 | 7/8-9 | 1.03 | 1.72 | 6.55 | 1-1/16 | 1.40 | 4.94 | 3.00 | 5.06 | 2.60 | 5.80 | 2.37 | .24 | 160 | CL-8000-SHRB-1 |
| CL-8000-SHR-2 | 8000 | 7/8-9 | 1.53 | 1.72 | 6.55 | 1-1/16 | 1.40 | 4.94 | 3.00 | 5.06 | 2.60 | 5.80 | 2.37 | .24 | 160 | CL-8000-SHRB-2 |
| CL-10000-SHR-1 | 10000 | 1"-8 | 1.28 | 1.72 | 6.55 | 1-1/16 | 1.40 | 4.94 | 3.00 | 5.06 | 2.72 | 5.80 | 2.37 | .24 | 230 | CL-10000-SHRB-1 |
| CL-10000-SHR-2 | 10000 | 1"-8 | 1.53 | 1.72 | 6.55 | 1-1/16 | 1.40 | 4.94 | 3.00 | 5.06 | 2.72 | 5.80 | 2.37 | .24 | 230 | CL-10000-SHRB-2 |
| CL-10000-SHR-3 | 10000 | 1"-8 | 2.28 | 1.72 | 6.55 | 1-1/16 | 1.40 | 4.94 | 3.00 | 5.06 | 2.72 | 5.80 | 2.37 | .24 | 230 | CL-10000-SHRB-3 |

CONTINUED ON NEXT PAGE

SWIVEL HOIST RINGS

STANDARD RING (METRIC)

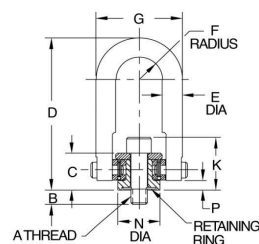
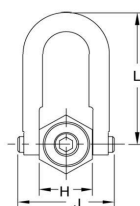
| PART NO. | LOAD RATING (kg) | A THREAD | B (mm) | C (mm) | D (mm) | E DIA (mm) | F (mm) | G (mm) | H (mm) | J (mm) | K (mm) | L (mm) | N DIA (mm) | P (mm) | INSTALLATION TORQUE (Nm) |
|----------------|------------------|----------|--------|--------|--------|------------|--------|--------|--------|--------|--------|--------|------------|--------|--------------------------|
| CLM-800-SHR-2 | 400 | M8 | 17 | 18 | 67 | 9.5 | 11 | 41 | 25.5 | 46 | 26 | 60 | 19 | 4.5 | 9 |
| CLM-1000-SHR-1 | 450 | M10 | 17 | 18 | 67 | 9.5 | 11 | 41 | 25.5 | 46 | 28 | 60 | 19 | 4.5 | 16 |
| CLM-2500-SHR-1 | 1050 | M12 | 19 | 31 | 121 | 19 | 22 | 83 | 51 | 89 | 43 | 108 | 38 | 4 | 37 |
| CLM-4000-SHR-2 | 1900 | M16 | 29 | 31 | 121 | 19 | 22 | 83 | 51 | 89 | 47 | 108 | 38 | 4 | 80 |
| CLM-24020-SHR | 2200 | M20 | 30 | 31 | 121 | 19 | 22 | 83 | 51 | 89 | 51 | 108 | 38 | 4 | 136 |
| CLM-7000-SHR-2 | 3000 | M20 | 32 | 44 | 166 | 27 | 36 | 125 | 76 | 129 | 64 | 147 | 59 | 6 | 136 |
| CLM-9000-SHR-2 | 4200 | M24 | 37 | 44 | 166 | 27 | 36 | 125 | 76 | 129 | 68 | 147 | 59 | 6 | 216 |

2



Optional Long-Ring Version

Long-ring version provides extra reach and allows using larger lifting hooks.



LONG RING (INCH)

| PART NO. | LOAD RATING (LBS) | A | B | C | D | E DIA | F | G | H | J | K | L | N DIA | P | INSTALLATION TORQUE (FT-LBS) | REPLACEMENT BOLT WITH (RETAINING RING) |
|--------------|-------------------|--------|------|------|------|-------|------|------|------|------|------|------|-------|-----|------------------------------|--|
| CL-23322-SHR | 2500 | 1/2-13 | .78 | 1.22 | 6.72 | 3/4 | .88 | 3.25 | 1.99 | 3.52 | 1.72 | 6.19 | 1.50 | .16 | 28 | CL-23024-SHRB |
| CL-23323-SHR | | | 1.03 | | | | | | | | | | | | | CL-23025-SHRB |
| CL-23324-SHR | | | 1.28 | | | | | | | | | | | | | CL-23026-SHRB |
| CL-23320-SHR | 4000 | 5/8-11 | 1.03 | 1.22 | 6.72 | 3/4 | .88 | 3.25 | 1.99 | 3.52 | 1.85 | 6.19 | 1.50 | .16 | 60 | CL-23022-SHRB |
| CL-23321-SHR | | | 1.28 | | | | | | | | | | | | | CL-23023-SHRB |
| CL-23325-SHR | | | 1.03 | | | | | | | | | | | | | CL-23027-SHRB |
| CL-23327-SHR | 5000 | 3/4-10 | 1.53 | 1.22 | 6.72 | 3/4 | .88 | 3.25 | 1.99 | 3.52 | 1.97 | 6.19 | 1.50 | .16 | 100 | CL-23029-SHRB |
| CL-23329-SHR | | | 1.04 | | | | | | | | | | | | | CL-23122-SHRB |
| CL-23330-SHR | | | 1.54 | | | | | | | | | | | | | CL-23123-SHRB |
| CL-23328-SHR | 7000 | 3/4-10 | 1.04 | 1.71 | 8.11 | 1 | 1.40 | 4.80 | 3.00 | 5.14 | 2.46 | 7.38 | 2.37 | .24 | 100 | CL-23121-SHRB |
| CL-23331-SHR | | | 1.29 | | | | | | | | | | | | | CL-23125-SHRB |
| CL-23332-SHR | | | 1.54 | | | | | | | | | | | | | CL-23126-SHRB |
| CL-23333-SHR | 10000 | 1"-8 | 2.29 | 1.71 | 8.11 | 1 | 1.40 | 4.80 | 3.00 | 5.14 | 2.71 | 7.38 | 2.37 | .24 | 230 | CL-23127-SHRB |

LONG RING (METRIC)

| PART NO. | LOAD RATING (kg) | A THREAD | THREAD PITCH (mm) | B (mm) | C (mm) | D (mm) | E DIA (mm) | F (mm) | G (mm) | H (mm) | J (mm) | K (mm) | L (mm) | N DIA (mm) | P (mm) | INSTALLATION TORQUE (Nm) |
|---------------|------------------|----------|-------------------|--------|--------|--------|------------|--------|--------|--------|--------|--------|--------|------------|--------|--------------------------|
| CLM-24014-SHR | 1050 | M12 | 1.75 | 19 | 31 | 171 | 19 | 22 | 83 | 51 | 89 | 43 | 157 | 38 | 4 | 37 |
| CLM-24018-SHR | 1900 | M16 | 2 | 24 | 31 | 171 | 19 | 22 | 83 | 51 | 89 | 47 | 157 | 38 | 4 | 80 |
| CLM-24021-SHR | 2200 | M20 | 2.5 | 30 | 31 | 171 | 19 | 22 | 83 | 51 | 89 | 51 | 157 | 38 | 4 | 136 |
| CLM-24023-SHR | 3000 | M20 | 2.5 | 29 | 43 | 206 | 25.5 | 36 | 121 | 76 | 131 | 64 | 187 | 60 | 6 | 136 |
| CLM-24026-SHR | 4200 | M24 | 3 | 34 | 43 | 206 | 25.5 | 36 | 121 | 76 | 131 | 67 | 187 | 60 | 6 | 310 |
| CLM-24032-SHR | 4500 | M30 | 3.5 | 54 | 43 | 206 | 25.5 | 36 | 121 | 76 | 131 | 73 | 187 | 60 | 6 | 310 |

NICKEL-PLATED SWIVEL HOIST RINGS

ALLOY STEEL, HEAT TREATED, ELECTROLESS NICKEL PLATED, 100% MAGNAFLUX INSPECTED

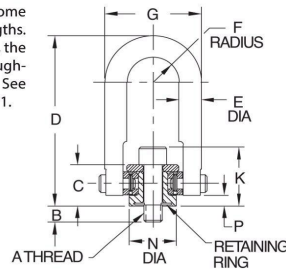
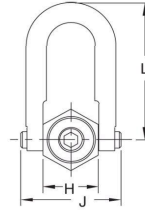
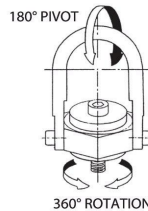
2



Nickel Plated

Our original alloy-steel Swivel Hoist Rings are now available with electroless nickel plating. These hoist rings offer excellent corrosion and wear resistance while still providing the full load capacity of our heat-treated alloy-steel hoist rings. Electroless nickel is a hard, uniform coating that is very resistant to a wide range of chemicals, which makes these hoist rings suitable for many corrosive and marine environments. Swivel Hoist Rings pivot 180 degrees and swivel 360 degrees simultaneously to allow lifting from any direction. Safety factor = 5:1. **Patent no. 3,297,293 and 4,705,422.**

Fasten hoist rings using the installation torque specified in the dimension table. Always install so that the hoist ring can pivot and swivel freely. Some hoist rings are available with a choice of bolt lengths. Use the shortest bolt length only for steel plates, the other lengths for weaker materials and for through-hole mounting with a washer and nut. **INFO+:** See general Hoist Ring Safety Precautions on page 71.



STANDARD RING, ELECTROLESS NICKEL PLATED (INCH)

| PART NO. | LOAD RATING (LBS) | A | B | C | D | E DIA | F | G | H | J | K | L | N DIA | P | INSTALLATION TORQUE (FT-LBS) | REPLACEMENT BOLT (WITH RETAINING RING) |
|-----------------|-------------------|---------|------|------|------|-------|-----|------|------|------|------|------|-------|-----|------------------------------|--|
| CL-800-SHR-2-N | 800 | 5/16-18 | .54 | .72 | 2.63 | 3/8 | .44 | 1.62 | 1.00 | 1.82 | 1.03 | 2.35 | .75 | .17 | 7 | CL-800-SHRB-2-N |
| CL-1000-SHR-1-N | 1000 | 3/8-16 | .54 | .72 | 2.63 | 3/8 | .44 | 1.62 | 1.00 | 1.82 | 1.09 | 2.35 | .75 | .17 | 12 | CL-1000-SHRB-1-N |
| CL-2500-SHR-1-N | 2500 | 1/2-13 | .77 | 1.23 | 4.77 | 3/4 | .88 | 3.25 | 2.00 | 3.52 | 1.73 | 4.24 | 1.50 | .16 | 28 | CL-2500-SHRB-1-N |
| CL-2500-SHR-2-N | | | 1.02 | | | | | | | | | | | | | CL-2500-SHRB-2-N |
| CL-2500-SHR-3-N | | | 1.27 | | | | | | | | | | | | | CL-2500-SHRB-3-N |
| CL-4000-SHR-1-N | 4000 | 5/8-11 | .77 | 1.23 | 4.77 | 3/4 | .88 | 3.25 | 2.00 | 3.52 | 1.86 | 4.24 | 1.50 | .16 | 60 | CL-4000-SHRB-1-N |
| CL-4000-SHR-2-N | | | 1.02 | | | | | | | | | | | | | CL-4000-SHRB-2-N |
| CL-4000-SHR-3-N | | | 1.27 | | | | | | | | | | | | | CL-4000-SHRB-3-N |
| CL-5000-SHR-1-N | 5000 | 3/4-10 | 1.02 | 1.23 | 4.77 | 3/4 | .88 | 3.25 | 2.00 | 3.52 | 1.98 | 4.24 | 1.50 | .16 | 100 | CL-5000-SHRB-1-N |
| CL-5000-SHR-2-N | | | 1.52 | | | | | | | | | | | | | CL-5000-SHRB-2-N |

STANDARD RING, ELECTROLESS NICKEL PLATED (METRIC)

| PART NO. | LOAD RATING (kg) | A THREAD | THREAD PITCH (mm) | B (mm) | C (mm) | D (mm) | E DIA (mm) | F (mm) | G (mm) | H (mm) | J (mm) | K (mm) | L (mm) | N DIA (mm) | P (mm) | INSTALLATION TORQUE (Nm) |
|------------------|------------------|----------|-------------------|--------|--------|--------|------------|--------|--------|--------|--------|--------|--------|------------|--------|--------------------------|
| CLM-800-SHR-2-N | 400 | M8 | 1.25 | 17 | 18 | 67 | 9.5 | 11 | 41 | 25.5 | 46 | 26 | 60 | 19 | 4.5 | 9 |
| CLM-1000-SHR-1-N | 450 | M10 | 1.5 | 17 | 18 | 67 | 9.5 | 11 | 41 | 25.5 | 46 | 28 | 60 | 19 | 4.5 | 16 |
| CLM-2500-SHR-1-N | 1050 | M12 | 1.75 | 19 | 31 | 121 | 19 | 22 | 83 | 51 | 89 | 43 | 108 | 38 | 4 | 37 |
| CLM-4000-SHR-2-N | 1900 | M16 | 2 | 29 | 31 | 121 | 19 | 22 | 83 | 51 | 89 | 47 | 108 | 38 | 4 | 80 |

STAINLESS SWIVEL HOIST RINGS

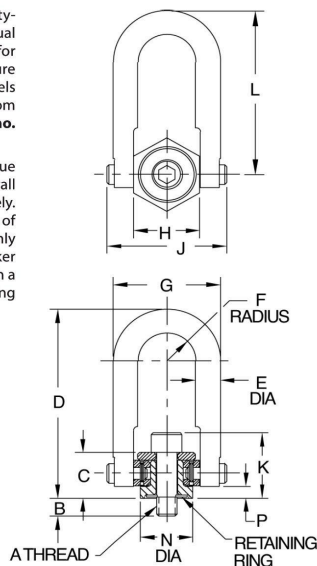
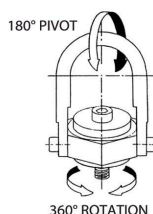
300-SERIES STAINLESS STEEL, PASSIVATED, 100% LIQUID-PENETRANT INSPECTED



Stainless Steel

Stainless steel version of our original safety-engineered hoist ring, with a load rating equal to 50% of the alloy steel version. Useful for corrosive, cryogenic, or elevated-temperature environments. Pivots 180 degrees and swivels 360 degrees simultaneously to allow lifting from any direction. Safety factor = 5:1. **Patent no. 3,297,293 and 4,705,422.**

Fasten hoist rings using the installation torque specified in the dimension table. Always install so that the hoist ring can pivot and swivel freely. Some hoist rings are available with a choice of bolt lengths. Use the shortest bolt length only for steel plates, the other lengths for weaker materials and for through-hole mounting with a washer and nut. **INFO+:** See general Hoist Ring Safety Precautions on page 71.



STANDARD RING — STAINLESS STEEL (INCH)

| PART NO. | LOAD RATING (LBS) | A | B | C | D | E DIA | F | G | H | J | K | L | N DIA | P | INSTALLTION TORQUE (FT-LBS) |
|-----------------|-------------------|----------|------|------|-------|-------|------|-------|------|-------|------|-------|-------|------|-----------------------------|
| CL-275-SHR-1-S | 275 | 1/4-20 | .54 | .71 | 2.67 | 3/8 | .43 | 1.61 | 1.00 | 1.84 | 1.03 | 2.31 | .75 | .17 | 2.5 |
| CL-400-SHR-2-S | 400 | 5/16-18 | .54 | .71 | 2.67 | 3/8 | .43 | 1.61 | 1.00 | 1.84 | .96 | 2.31 | .75 | .17 | 3.5 |
| CL-500-SHR-1-S | 500 | 3/8-16 | .54 | .71 | 2.67 | 3/8 | .43 | 1.61 | 1.00 | 1.84 | 1.09 | 2.31 | .75 | .17 | 6 |
| CL-29301-SHR-S | 1250 | 1/2-13 | 1.07 | .93 | 3.77 | 1/2 | .70 | 2.40 | 1.49 | 2.58 | 1.43 | 3.31 | 1.25 | .20 | 14 |
| CL-1250-SHR-1-S | 1250 | 1/2-13 | .78 | | | | | | | | | | | | |
| CL-1250-SHR-2-S | | | 1.03 | 1.22 | 4.78 | 3/4 | .88 | 3.25 | 1.99 | 3.52 | 1.72 | 4.25 | 1.50 | .16 | 14 |
| CL-1250-SHR-3-S | | | 1.28 | | | | | | | | | | | | |
| CL-2000-SHR-1-S | 2000 | 5/8-11 | .78 | 1.22 | 4.78 | 3/4 | .88 | 3.25 | 1.99 | 3.52 | 1.85 | 4.25 | 1.50 | .16 | 30 |
| CL-2500-SHR-1-S | 2500 | 3/4-10 | 1.03 | 1.22 | 4.78 | 3/4 | .88 | 3.25 | 1.99 | 3.52 | 1.97 | 4.25 | 1.50 | .16 | 50 |
| CL-29102-SHR-S | 3500 | 3/4-10 | 1.04 | 1.71 | 6.52 | 1 | 1.40 | 4.80 | 3.00 | 5.14 | 2.46 | 5.78 | 2.37 | .24 | 50 |
| CL-29103-SHR-S | | | 1.54 | | | | | | | | | | | | |
| CL-29101-SHR-S | | | 1.04 | 1.71 | 6.52 | 1 | 1.40 | 4.80 | 3.00 | 5.14 | 2.59 | 5.78 | 2.37 | .24 | 80 |
| CL-29105-SHR-S | 5000 | 1"-8 | 1.29 | | | | | | | | | | | | |
| CL-29106-SHR-S | | | 1.54 | 1.71 | 6.52 | 1 | 1.40 | 4.80 | 3.00 | 5.14 | 2.71 | 5.78 | 2.37 | .24 | 115 |
| CL-29107-SHR-S | | | 2.29 | | | | | | | | | | | | |
| CL-29401-SHR-S | 7500 | 1-1/4"-7 | 1.89 | 2.11 | 8.73 | 1-1/4 | 1.75 | 6.00 | 3.76 | 6.50 | 3.36 | 7.75 | 3.20 | .35 | 235 |
| CL-29202-SHR-S | 12000 | 1-1/2"-6 | 2.70 | 2.81 | 12.47 | 1-3/4 | 2.25 | 8.00 | 4.87 | 8.55 | 4.31 | 11.12 | 4.20 | .47 | 400 |
| CL-29200-SHR-S | 15000 | 2"-4-1/2 | 2.96 | 2.81 | 12.47 | 1-3/4 | 2.25 | 8.00 | 4.87 | 8.55 | 5.31 | 11.12 | 4.20 | .47 | 550 |
| CL-29503-SHR-S | 25000 | 2-1/2"-4 | | | | | | | | | | | | | |
| CL-29501-SHR-S | | | 4.00 | 4.09 | 16.87 | 2-1/4 | 3.00 | 10.50 | 6.52 | 11.67 | 6.59 | 14.50 | 5.75 | 1.12 | 1050 |
| CL-29600-SHR-S | | | 5.20 | 5.27 | 19.50 | 2-3/4 | 3.75 | 13.00 | 8.10 | 14.15 | 8.27 | 17.00 | 7.25 | 1.00 | 2150 |
| CL-29600-SHR-S | 37500 | 3"-4 | | | | | | | | | | | | | |
| CL-29701-SHR-S | 50000 | 3-1/2"-4 | 7.00 | 6.06 | 22.09 | 3-1/4 | 4.00 | 14.50 | 8.60 | 15.90 | 9.56 | 19.25 | 7.75 | 1.09 | 3300 |

CONTINUED ON NEXT PAGE

STAINLESS SWIVEL HOIST RINGS

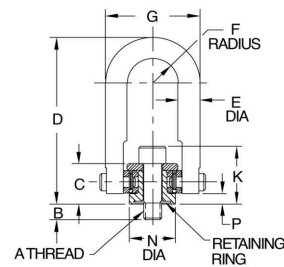
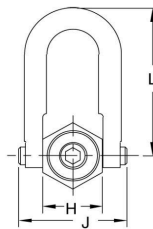
STANDARD RING — STAINLESS STEEL (METRIC)

| PART NO. | LOAD RATING (kg) | A THREAD | THREAD PITCH (mm) | B (mm) | C (mm) | D (mm) | E DIA (mm) | F (mm) | G (mm) | H (mm) | J (mm) | K (mm) | L (mm) | N DIA (mm) | P (mm) | INSTALLATION TORQUE (Nm) |
|------------------|------------------|----------|-------------------|--------|--------|--------|------------|--------|--------|--------|--------|--------|--------|------------|--------|--------------------------|
| CLM-440-SHR-2-S | 200 | M8 | 1.25 | 17 | 18 | 68 | 9.5 | 11 | 41 | 25.5 | 47 | 26 | 59 | 19 | 4.5 | 5 |
| CLM-500-SHR-1-S | 225 | M10 | 1.5 | 17 | 18 | 68 | 9.5 | 11 | 41 | 25.5 | 47 | 28 | 59 | 19 | 4.5 | 8 |
| CLM-1150-SHR-1-S | 525 | M12 | 1.75 | 19 | 31 | 121 | 19 | 22 | 83 | 51 | 89 | 43 | 108 | 38 | 4 | 19 |
| CLM-29816-SHR-S | 950 | M16 | 2 | 24 | 31 | 121 | 19 | 22 | 83 | 51 | 89 | 47 | 108 | 38 | 4 | 41 |
| CLM-29820-SHR-S | 1100 | M20 | 2.5 | 30 | 31 | 121 | 19 | 22 | 83 | 51 | 89 | 51 | 108 | 38 | 4 | 68 |
| CLM-29822-SHR-S | 1500 | M20 | 2.5 | 29 | 43 | 166 | 25.5 | 36 | 121 | 76 | 131 | 64 | 147 | 59 | 6 | 68 |
| CLM-29824-SHR-S | 2100 | M24 | 3 | 34 | 43 | 166 | 25.5 | 36 | 121 | 76 | 131 | 67 | 147 | 59 | 6 | 156 |
| CLM-29830-SHR-S | 2250 | M30 | 3.5 | 54 | 43 | 166 | 25.5 | 36 | 121 | 76 | 131 | 73 | 147 | 59 | 6 | 156 |
| CLM-29840-SHR-S | 3500 | M30 | 3.5 | 46 | 54 | 222 | 32 | 44 | 152 | 96 | 165 | 84 | 197 | 81 | 9 | 320 |
| CLM-29842-SHR-S | 3500 | M30 | 3.5 | 66 | 54 | 222 | 32 | 44 | 152 | 96 | 165 | 84 | 197 | 81 | 9 | 320 |
| CLM-29850-SHR-S | 5500 | M36 | 4 | 69 | 71 | 317 | 44 | 57 | 203 | 124 | 217 | 107 | 282 | 107 | 12 | 540 |
| CLM-29852-SHR-S | 6250 | M42 | 4.5 | 79 | 71 | 317 | 44 | 57 | 203 | 124 | 217 | 113 | 282 | 107 | 12 | 540 |
| CLM-29854-SHR-S | 7250 | M48 | 5 | 79 | 71 | 317 | 44 | 57 | 203 | 124 | 217 | 119 | 282 | 107 | 12 | 540 |
| CLM-29860-SHR-S | 11000 | M64 | 6 | 102 | 104 | 428 | 57 | 76 | 267 | 166 | 296 | 168 | 368 | 146 | 28 | 1400 |



Optional Long-Ring Version

Long-ring version provides extra reach and allows using larger lifting hooks.



LONG RING — STAINLESS STEEL (INCH)

| PART NO. | LOAD RATING (LBS) | A | B | C | D | E DIA | F | G | H | J | K | L | N DIA | P | INSTALLATION TORQUE (FT-LBS) |
|----------------|-------------------|--------|------|------|------|-------|------|------|------|------|------|------|-------|-----|------------------------------|
| CL-29322-SHR-S | 1250 | 1/2-13 | .78 | 1.22 | 6.72 | 3/4 | .88 | 3.25 | 1.99 | 3.52 | 1.72 | 6.19 | 1.50 | .16 | 14 |
| CL-29323-SHR-S | | | 1.03 | | | | | | | | | | | | |
| CL-29324-SHR-S | | | 1.28 | | | | | | | | | | | | |
| CL-29320-SHR-S | 2000 | 5/8-11 | 1.03 | 1.22 | 6.72 | 3/4 | .88 | 3.25 | 1.99 | 3.52 | 1.85 | 6.19 | 1.50 | .16 | 30 |
| CL-29321-SHR-S | | | 1.28 | | | | | | | | | | | | |
| CL-29325-SHR-S | | | 1.03 | | | | | | | | | | | | |
| CL-29327-SHR-S | 2500 | 3/4-10 | 1.53 | 1.22 | 6.72 | 3/4 | .88 | 3.25 | 1.99 | 3.52 | 1.97 | 6.19 | 1.50 | .16 | 50 |
| CL-29329-SHR-S | | | 1.04 | | | | | | | | | | | | |
| CL-29330-SHR-S | | | 1.54 | | | | | | | | | | | | |
| CL-29328-SHR-S | 4000 | 7/8-9 | 1.04 | 1.71 | 8.11 | 1 | 1.40 | 4.80 | 3.00 | 5.14 | 2.59 | 7.38 | 2.37 | .24 | 80 |
| CL-29331-SHR-S | | | 1.29 | | | | | | | | | | | | |
| CL-29332-SHR-S | | | 1.54 | | | | | | | | | | | | |
| CL-29333-SHR-S | 5000 | 1*-8 | 2.29 | 1.71 | 8.11 | 1 | 1.40 | 4.80 | 3.00 | 5.14 | 2.71 | 7.38 | 2.37 | .24 | 115 |
| CL-29333-SHR-S | | | 2.29 | | | | | | | | | | | | |

LONG RING — STAINLESS STEEL (METRIC)

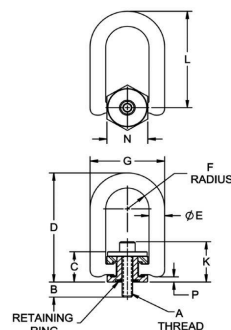
| PART NO. | LOAD RATING (kg) | A THREAD | THREAD PITCH (mm) | B (mm) | C (mm) | D (mm) | E DIA (mm) | F (mm) | G (mm) | H (mm) | J (mm) | K (mm) | L (mm) | N DIA (mm) | P (mm) | INSTALLATION TORQUE (Nm) |
|------------------------|------------------|----------|-------------------|--------|--------|--------|------------|--------|--------|--------|--------|--------|--------|------------|--------|--------------------------|
| CLM-29814-SHR-S | 525 | M12 | 1.75 | 19 | 31 | 171 | 19 | 22 | 83 | 51 | 89 | 43 | 157 | 38 | 4 | 19 |
| CLM-29818-SHR-S | 950 | M16 | 2 | 24 | 31 | 171 | 19 | 22 | 83 | 51 | 89 | 47 | 157 | 38 | 4 | 41 |
| CLM-29821-SHR-S | 1100 | M20 | 2.5 | 30 | 31 | 171 | 19 | 22 | 83 | 51 | 89 | 51 | 157 | 38 | 4 | 68 |
| CLM-29823-SHR-S | 1500 | M20 | 2.5 | 29 | 43 | 206 | 25.5 | 36 | 121 | 76 | 131 | 64 | 187 | 60 | 6 | 68 |
| CLM-29826-SHR-S | 2100 | M24 | 3 | 34 | 43 | 206 | 25.5 | 36 | 121 | 76 | 131 | 67 | 187 | 60 | 6 | 156 |
| Please contact factory | 2250 | M30 | 3.5 | 54 | 43 | 206 | 25.5 | 36 | 121 | 76 | 131 | 73 | 187 | 60 | 6 | 320 |

FORGED SWIVEL HOIST RING

BODY: 4140 STEEL, HEAT TREATED, BLACK OXIDE; RING: 4140 STEEL, HEAT TREATED, BLACK OXIDE
BUSHING: 4140 STEEL, HEAT TREATED, BLACK OXIDE; WASHER: 17-4PH, H900, PASSIVATED



Carr Lane's Forged Swivel Hoist Rings feature a forged lifting ring and simpler construction for easy disassembly. Swivel Hoist Rings pivot 180° and swivel 360° simultaneously to allow lifting from any direction. Available with inch or metric threads in load capacities up to 10,000 lbs, many with a choice of bolt length. Complies with ASME B30.26, CEN/TC 168 Reference EN 1677-1: 2000 Part 1 and 2006/42/EC. Fasten using the installation torque specified in the dimension table. Always install so that the hoist ring can pivot and swivel freely. Some hoist rings are available with a choice of bolt lengths. Use the shortest bolt length only for steel plates, the other lengths for weaker materials, and for through-hole mounting with a washer and nut. **INFO+:** See general Hoist Ring Safety Precautions on page 71. Forged Swivel Hoist Rings can be easily disassembled. One benefit of this is easier cleaning.



2

FORGED SWIVEL HOIST RING (INCH)

| PART NO. | LOAD RATING (TON) | A THREAD | B | C | D | E DIA | F | G | K | L | N | P | INSTALLATION TORQUE (ft/lbs) |
|-----------------|-------------------|----------|------|------|------|-------|------|------|------|------|------|-----|------------------------------|
| CL-550-FSHR-1 | .275 | 1/4-20 | .26 | .94 | 3.28 | .42 | .64 | 2.26 | 1.19 | 2.87 | 1.22 | .17 | 5 |
| CL-800-FSHR-1 | .4 | 5/16-18 | .56 | .94 | 3.28 | .42 | .64 | 2.26 | 1.25 | 2.87 | 1.22 | .17 | 7 |
| CL-800-FSHR-2 | | | 1.06 | | | | | | | | | | |
| CL-1000-FSHR-1 | .5 | 3/8-16 | .56 | .94 | 3.28 | .42 | .64 | 2.26 | 1.32 | 2.87 | 1.22 | .17 | 12 |
| CL-1000-FSHR-2 | | | 1.06 | | | | | | | | | | |
| CL-2250-FSHR-1 | 1.125 | 1/2-13 | 1.06 | .94 | 3.28 | .42 | .64 | 2.26 | 1.44 | 2.87 | 1.22 | .17 | 25 |
| CL-2500-FSHR-1 | 1.25 | 1/2-13 | .75 | | | | | | | | | | |
| CL-2500-FSHR-2 | | | 1.00 | 1.50 | 5.40 | .75 | 1.04 | 3.56 | 2.00 | 4.77 | 1.95 | .26 | 28 |
| CL-2500-FSHR-3 | | | 1.25 | | | | | | | | | | |
| CL-4000-FSHR-1 | | | .75 | | | | | | | | | | |
| CL-4000-FSHR-2 | 2 | 5/8-11 | 1.00 | 1.50 | 5.40 | .75 | 1.04 | 3.56 | 2.13 | 4.77 | 1.95 | .26 | 60 |
| CL-4000-FSHR-3 | | | 1.25 | | | | | | | | | | |
| CL-5000-FSHR-1 | 2.5 | 3/4-10 | 1.00 | 1.50 | 5.40 | .75 | 1.04 | 3.56 | 2.25 | 4.77 | 1.95 | .26 | 100 |
| CL-5000-FSHR-2 | | | 1.50 | | | | | | | | | | |
| CL-7000-FSHR-1 | 3.5 | 3/4-10 | .95 | 2.05 | 7.40 | 1.13 | 1.51 | 5.51 | 2.92 | 6.62 | 2.95 | .23 | 100 |
| CL-7000-FSHR-2 | | | 1.20 | | | | | | | | | | |
| CL-7000-FSHR-3 | | | 1.45 | | | | | | | | | | |
| CL-8000-FSHR-1 | 4 | 7/8-9 | .95 | 2.05 | 7.40 | 1.13 | 1.51 | 5.51 | 3.05 | 6.62 | 2.95 | .23 | 160 |
| CL-8000-FSHR-2 | | | 1.20 | | | | | | | | | | |
| CL-10000-FSHR-1 | 5 | 1"-8 | 1.20 | 2.05 | 7.40 | 1.13 | 1.51 | 5.51 | 3.17 | 6.62 | 2.95 | .23 | 230 |
| CL-10000-FSHR-2 | | | 1.45 | | | | | | | | | | |
| CL-10000-FSHR-3 | | | 2.20 | | | | | | | | | | |

FORGED SWIVEL HOIST RING (METRIC)

| PART NO. | LOAD RATING (TONNE) | A THREAD | B mm | C mm | D mm | E DIA mm | F mm | G mm | K mm | L mm | N mm | P mm | INSTALLATION TORQUE (Nm) |
|-----------------|---------------------|----------|------|------|-------|----------|------|-------|------|-------|------|------|--------------------------|
| CLM-400-FSHR-1 | .4 | M8x1.25 | 16 | 23.9 | 83.6 | 10.7 | 16.3 | 57.5 | 31.7 | 72.8 | 31 | 4.6 | 9.5 |
| CLM-400-FSHR-2 | | | 21 | | | | | | | | | | |
| CLM-450-FSHR-1 | .45 | M10x1.5 | 16 | 23.9 | 83.6 | 10.7 | 16.3 | 57.5 | 33.7 | 72.8 | 31 | 4.6 | 16 |
| CLM-450-FSHR-2 | | | 26 | | | | | | | | | | |
| CLM-1050-FSHR-1 | 1.05 | M12x1.75 | 25 | 38.1 | 137.3 | 19 | 26.3 | 90.5 | 49.9 | 121.3 | 49.5 | 6.5 | 37 |
| CLM-1050-FSHR-2 | | | 32 | | | | | | | | | | |
| CLM-1900-FSHR-1 | 1.9 | M16x2.0 | 25 | 38.1 | 137.3 | 19 | 26.3 | 90.5 | 53.9 | 121.3 | 49.5 | 6.5 | 80 |
| CLM-1900-FSHR-2 | | | 32 | | | | | | | | | | |
| CLM-2200-FSHR-1 | 2.2 | M20x2.5 | 25 | 38.1 | 137.3 | 19 | 26.3 | 90.5 | 57.9 | 121.3 | 49.5 | 6.5 | 135 |
| CLM-2200-FSHR-2 | | | 38 | | | | | | | | | | |
| CLM-3000-FSHR-1 | 3 | M20x2.5 | 28 | 52.1 | 188.1 | 28.6 | 38.3 | 139.9 | 71.8 | 168.2 | 75 | 5.9 | 135 |
| CLM-4200-FSHR-1 | 4.2 | M24x3.0 | 38 | 52.1 | 188.1 | 28.6 | 38.3 | 139.9 | 75.8 | 168.2 | 75 | 5.9 | 310 |
| CLM-4200-FSHR-2 | | | 38 | | | | | | | | | | |

www.carrlane.com

8/19 | Carr Lane Manufacturing Co. | 79

NICKLE PLATED FORGED SWIVEL HOIST RING

ALLOY STEEL, HEAT TREATED, ELECTROLESS NICKEL PLATED, 100% MAGNAFLUX INSPECTED

2



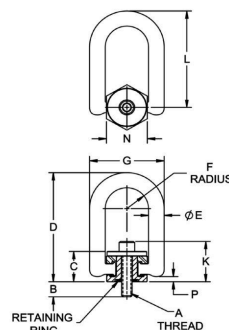
Nickel Plated

Carr Lane's Nickel Plated Forged Swivel Hoist Rings feature a forged lifting ring and simpler construction for easy disassembly.

Swivel Hoist Rings pivot 180° and swivel 360° simultaneously to allow lifting from any direction. Available with inch or metric threads in load capacities up to 10,000 lbs, many with a choice of bolt length.

Complies with ASME B30.26, CEN/TC 168 Reference EN 1677-1: 2000 Part 1 and 2006/42/EC. Fasten using the installation torque specified in the dimension table. Always install so that the hoist ring can pivot and swivel freely. Some hoist rings are available with a choice of bolt lengths. Use the shortest bolt length only for steel plates, the other lengths for weaker materials, and for through-hole mounting with a washer and nut. **INFO+**: See general Hoist Ring Safety Precautions on page 71.

Forged Swivel Hoist Rings can be easily disassembled. One benefit of this is easier cleaning.



NICKEL PLATED FORGED SWIVEL HOIST RING (INCH)

| PART NO. | LOAD RATING (TON) | A THREAD | B | C | D | E DIA | F | G | K | L | N | P | INSTALLATION TORQUE (ft/lbs) |
|-------------------|-------------------|----------|------|------|------|-------|------|------|------|------|------|-----|------------------------------|
| CL-1000-FSHR-1-N | .5 | 3/8-16 | .56 | .94 | 3.28 | .42 | .64 | 2.26 | 1.32 | 2.87 | 1.22 | .17 | 12 |
| CL-2500-FSHR-1-N | 1.25 | 1/2-13 | .75 | 1.50 | 5.40 | .75 | 1.04 | 3.56 | 2.00 | 4.77 | 1.95 | .26 | 28 |
| CL-2500-FSHR-2-N | | | 1.00 | | | | | | | | | | |
| CL-2500-FSHR-3-N | | | 1.25 | | | | | | | | | | |
| CL-4000-FSHR-1-N | 2 | 5/8-11 | .75 | 1.50 | 5.40 | .75 | 1.04 | 3.56 | 2.13 | 4.77 | 1.95 | .26 | 60 |
| CL-5000-FSHR-1-N | 2.5 | 3/4-10 | 1.00 | 1.50 | 5.40 | .75 | 1.04 | 3.56 | 2.25 | 4.77 | 1.95 | .26 | 100 |
| CL-7000-FSHR-1-N | 3.5 | 3/4-10 | .95 | 2.05 | 7.40 | 1.13 | 1.51 | 5.51 | 2.92 | 6.62 | 2.95 | .23 | 100 |
| CL-8000-FSHR-2-N | 4 | 7/8-9 | 1.20 | 2.05 | 7.40 | 1.13 | 1.51 | 5.51 | 3.05 | 6.62 | 2.95 | .23 | 160 |
| CL-10000-FSHR-1-N | 5 | 1"-8 | 1.20 | 2.05 | 7.40 | 1.13 | 1.51 | 5.51 | 3.17 | 6.62 | 2.95 | .23 | 230 |

NICKEL PLATED FORGED SWIVEL HOIST RING (METRIC)

| PART NO. | LOAD RATING (TONNE) | A THREAD | B mm | C mm | D mm | E DIA mm | F mm | G mm | K mm | L mm | N mm | P mm | INSTALLATION TORQUE (Nm) |
|-------------------|---------------------|----------|------|------|-------|----------|------|-------|------|-------|------|------|--------------------------|
| CLM-1050-FSHR-1-N | 1.05 | M12x1.75 | 25 | 38.1 | 137.3 | 19 | 26.3 | 90.5 | 49.9 | 121.3 | 49.5 | 6.5 | 37 |
| CLM-1900-FSHR-2-N | 1.9 | M16x2.0 | 32 | 38.1 | 137.3 | 19 | 26.3 | 90.5 | 53.9 | 121.3 | 49.5 | 6.5 | 80 |
| CLM-3000-FSHR-1-N | 3 | M20x2.5 | 28 | 52.1 | 188.1 | 28.6 | 38.3 | 139.9 | 71.8 | 168.2 | 75 | 5.9 | 135 |

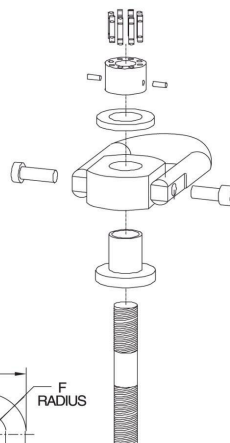
EZ-TORQUE® SWIVEL HOIST RINGS

ALLOY STEEL, HEAT TREATED, BLACK OXIDE FINISH, 100% MAGNAFLUX INSPECTED

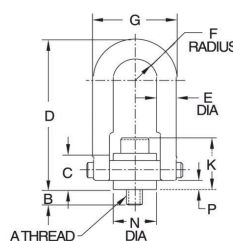
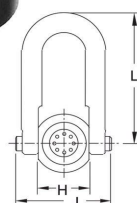


E-Z Torque®
Swivel Hoist Rings

Extra-large Swivel Hoist Rings with our patented system that allows tightening several smaller bolt heads with a standard torque wrench instead of tightening one large bolt with a special tool. Swivel Hoist Rings pivot 180 degrees and swivel 360 degrees simultaneously to allow lifting from any direction. Safety factor = 5:1. Black oxide finish is standard, with cadmium plating available as a special. Available in load capacities up to 250000 lbs. **Patent no. 3,297,293, 4,705,422, and 6,199,925.** Fasten hoist rings using the installation torque specified in the dimension table. Always install so that the hoist ring can pivot and swivel freely. **INFO+** See general Hoist Ring Safety Precautions on page 71.



2



INCH

| PART NO. | LOAD RATING (LBS) | A | B | C | D | E DIA | F | G | H | J | K | L | N DIA | P | INSTALLATION TORQUE (FT-LBS) |
|--------------|-------------------|----------|------|------|-------|-------|------|------|-------|-------|-------|-------|-------|------|------------------------------|
| CL-23490-SHR | 15000 | 1-1/4"-7 | 1.89 | 2.11 | 8.73 | 1-1/4 | 1.75 | 6.0 | 3.76 | 6.50 | 3.60 | 7.75 | 3.20 | .35 | 10 |
| CL-23494-SHR | 24000 | 1-1/2"-6 | 2.70 | 2.81 | 12.47 | 1-3/4 | 2.25 | 8.0 | 4.87 | 8.55 | 4.60 | 11.12 | 4.20 | .47 | 18 |
| CL-23290-SHR | 30000 | 2"-4-1/2 | 2.96 | 2.81 | 12.47 | 1-3/4 | 2.25 | 8.0 | 4.87 | 8.55 | 4.60 | 11.12 | 4.20 | .47 | 26 |
| CL-23592-SHR | 50000 | 2-1/2"-4 | 4.00 | 4.09 | 16.87 | 2-1/4 | 3.00 | 10.5 | 6.52 | 11.67 | 6.89 | 14.50 | 5.75 | 1.12 | 49 |
| CL-23590-SHR | | 2-1/2"-8 | | | | | | | | | | | | | |
| CL-23690-SHR | 75000 | 3"-4 | 5.20 | 5.27 | 19.50 | 2-3/4 | 3.75 | 13.0 | 8.10 | 14.15 | 8.72 | 17.00 | 7.25 | 1.00 | 92 |
| CL-23790-SHR | 100000 | 3-1/2"-4 | 7.00 | 6.06 | 22.09 | 3-1/4 | 4.00 | 14.5 | 8.60 | 15.90 | 9.56 | 19.25 | 7.75 | 1.09 | 98 |
| CL-23792-SHR | 150000 | 4-1/4"-4 | 8.50 | 7.50 | 27.38 | 4 | 5.00 | 18.0 | 10.75 | 19.69 | 10.45 | 23.81 | 9.87 | 1.33 | 123 |
| CL-23794-SHR | 200000 | 5"-4 | 9.00 | 9.00 | 33.00 | 5 | 6.00 | 22.0 | 13.00 | 24.00 | 13.00 | 28.50 | 12.38 | 1.88 | 193 |
| CL-23798-SHR | 250000 | 6"-4 | 9.00 | 9.00 | 33.00 | 5 | 6.00 | 22.0 | 13.00 | 24.00 | 13.00 | 28.50 | 12.38 | 1.88 | 207 |

METRIC

| PART NO. | LOAD RATING (kg) | A THREAD | THREAD PITCH (mm) | B (mm) | C (mm) | D (mm) | E DIA (mm) | F (mm) | G (mm) | H (mm) | J (mm) | K (mm) | L (mm) | N DIA (mm) | P (mm) | INSTALLATION TORQUE (N-m) |
|---------------|------------------|----------|-------------------|--------|--------|--------|------------|--------|--------|--------|--------|--------|--------|------------|--------|---------------------------|
| CLM-24490-SHR | 7000 | M30 | 3.5 | 66 | 53.5 | 222 | 32 | 44.5 | 152.5 | 95.5 | 165 | 83.5 | 197 | 81.5 | 8.9 | 13.5 |
| CLM-24494-SHR | 11000 | M36 | 4 | 69 | 71.5 | 317 | 44.5 | 57 | 203 | 123.5 | 217 | 107.5 | 282 | 106.5 | 11.9 | 20.8 |
| CLM-24498-SHR | 12500 | M42 | 4.5 | 79 | 71.5 | 317 | 44.5 | 57 | 203 | 123.5 | 217 | 113.5 | 282 | 106.5 | 11.9 | 21.6 |
| CLM-24290-SHR | 13500 | M48 | 5 | 79 | 71.5 | 317 | 44.5 | 57 | 203 | 123.5 | 217 | 119.5 | 282 | 106.5 | 11.9 | 21.3 |
| CLM-24592-SHR | 22000 | M64 | 6 | 102 | 104 | 428 | 57 | 76 | 267 | 165.5 | 296 | 168 | 368 | 146 | 28.4 | 54 |
| CLM-24690-SHR | 31500 | M72 | 6 | 132 | 134 | 495 | 70 | 95 | 330 | 206 | 368 | 210 | 432 | 184 | 25.4 | 125 |
| CLM-24790-SHR | 51000 | M90 | 6 | 178 | 154 | 561 | 82.5 | 101.5 | 368 | 218 | 404 | 243 | 489 | 197 | 27.7 | 133 |

HEAVY-DUTY® SWIVEL HOIST RINGS

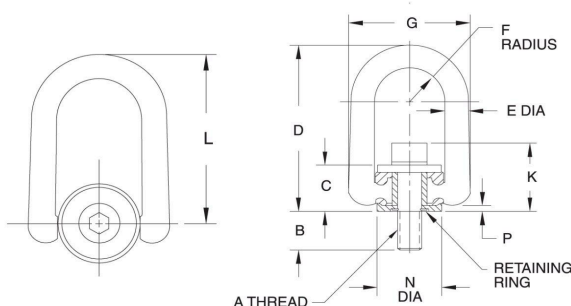
4140 STEEL, HEAT TREATED, BLACK OXIDE FINISH, 100% MAGNAFLUX INSPECTED

2



The next generation of Swivel Hoist Rings, with a heavy-duty forged steel ring. Pivots 180 degrees and swivels 360 degrees simultaneously to allow lifting from any direction. Safety factor = 5:1. Meets OSHA standards and Military Specification MIL-STD-1365(11) or MIL-STD-209C. **Patent no. 4,570,987 and 4,641,986, and other patents pending.**

Fasten hoist rings using the installation torque specified in the dimension table. Always install so that the hoist ring can pivot and swivel freely. Some hoist rings are available with a choice of bolt lengths. Use the shortest bolt length only for steel plates, the other lengths for weaker materials and for through-hole mounting with a washer and nut. **INFO+:** See general Hoist Ring Safety Precautions on page 71.



STANDARD RING (INCH)

| PART NO. | LOAD RATING (LBS) | A | B | C | D | E DIA | F | G | K | L | N DIA | P | INSTALLATION TORQUE (FT-LBS) | REPLACEMENT BOLT (WITH RETAINING RING) |
|--------------|-------------------|----------|------|------|------|-------|------|------|------|------|-------|-----|------------------------------|--|
| CL-33106-SHR | 10000 | 1"-8 | 1.20 | 2.05 | 7.37 | 1.00 | 1.40 | 5.10 | 3.05 | 6.62 | 2.81 | .18 | 230 | CL-33126-SHRB |
| CL-33105-SHR | | | 1.45 | | | | | | | | | | | CL-33125-SHRB |
| CL-33107-SHR | | | 2.20 | | | | | | | | | | | CL-33127-SHRB |
| CL-33402-SHR | 15000 | 1-1/4"-7 | 1.88 | 2.87 | 9.22 | 1.25 | 2.00 | 6.75 | 4.23 | 8.12 | 3.88 | .32 | 470 | CL-33419-SHRB |
| CL-33401-SHR | | | 2.63 | | | | | | | | | | | CL-33421-SHRB |
| CL-33420-SHR | 20000 | 1-3/8"-6 | 2.63 | 2.87 | 9.22 | 1.25 | 2.00 | 6.75 | 4.35 | 8.12 | 3.88 | .32 | 670 | CL-33429-SHRB |
| CL-33424-SHR | 24000 | 1-1/2"-6 | 2.63 | 2.87 | 9.22 | 1.25 | 2.00 | 6.75 | 4.48 | 8.12 | 3.88 | .32 | 800 | CL-33422-SHRB |
| CL-33427-SHR | 30000 | 2"-4-1/2 | 2.96 | 2.87 | 9.22 | 1.25 | 2.00 | 6.75 | 4.48 | 8.12 | 3.88 | .32 | 1100 | — |
| CL-33432-SHR | | 2"-8 | | | | | | | | | | | | — |

STANDARD RING (METRIC)

| PART NO. | LOAD RATING (kg) | A THREAD | THREAD PITCH (mm) | B (mm) | C (mm) | D (mm) | E DIA (mm) | F (mm) | G (mm) | K (mm) | L (mm) | N DIA (mm) | P (mm) | INSTALLATION TORQUE (Nm) | REPLACEMENT BOLT (WITH RETAINING RING) |
|---------------|------------------|----------|-------------------|--------|--------|--------|------------|--------|--------|--------|--------|------------|--------|--------------------------|--|
| CLM-34401-SHR | 7000 | M30 | 3.5 | 67 | 73 | 234 | 32 | 51 | 171.5 | 107.5 | 206 | 98.5 | 8.2 | 640 | CLM-34421-SHRB |
| CLM-34402-SHR | 11000 | M36 | 4 | 67 | 73 | 234 | 32 | 51 | 171.5 | 114 | 206 | 98.5 | 8.2 | 1090 | CLM-34422-SHRB |
| CLM-34403-SHR | 12500 | M42 | 4.5 | 80 | 73 | 234 | 32 | 51 | 171.5 | 114 | 206 | 98.5 | 8.2 | 1090 | CLM-24232-SHRB |
| CLM-34404-SHR | 13500 | M48 | 5 | 80 | 73 | 234 | 32 | 51 | 171.5 | 114 | 206 | 98.5 | 8.2 | 1090 | CLM-24225-SHRB |

HEAVY-DUTY® SIDE-PULL HOIST RINGS

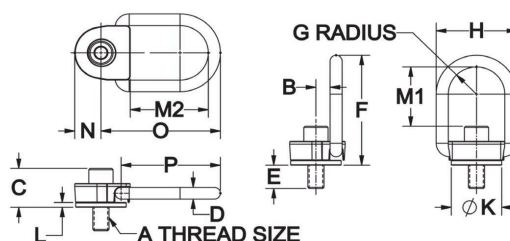
ALLOY STEEL, BLACK OXIDE FINISH, 100% MAGNAFLUX INSPECTED



**D-Ring
Type**

Heavy-Duty version of our Side-Pull Hoist Rings offers greater load capacity in a given mounting-thread size. D-Ring type shown here is ideal for working with web slings. Side-Pull Hoist Rings are ideal for side mounting. Flip and turn loads without unhooking (use with a spreader bar). Forged alloy-steel ring pivots and swivels 360 degrees simultaneously to allow lifting from any direction. Safety factor = 5:1. **Patent no. 6,267,422.** Fasten hoist ring using the installation torque specified in the dimension table. Always install so that the hoist ring can pivot and swivel freely. **INFO+:** See general Hoist Ring Safety Precautions on page 71.

2



D-RING TYPE (INCH)

| PART NO. | LOAD RATING (LBS) | A | B | C | D | E | F | G | H | K DIA | L | M1 | M2 | N | O | P | INSTALLTION TORQUE (FT-LBS) |
|---------------|-------------------|---------|------|------|-----|------|------|------|------|-------|-----|------|------|------|------|------|-----------------------------|
| CL-37305-SPHR | 800 | 5/16-18 | | 1.33 | | .48 | | | | | | 3.18 | | | | | 7 |
| CL-37310-SPHR | 1000 | 3/8-16 | | 1.40 | | | | | | | | 3.12 | | | | | 12 |
| CL-37315-SPHR | 2500 | 1/2-13 | .88 | 1.52 | .50 | | 5.12 | 1.44 | 3.88 | 2.19 | .23 | 2.99 | 3.43 | 1.25 | 5.48 | 4.61 | 28 |
| CL-37320-SPHR | 4000 | 5/8-11 | | 1.65 | | .98 | | | | | | 2.87 | | | | | 60 |
| CL-37325-SPHR | 5000 | 3/4-10 | | 1.77 | | 1.23 | | | | | | 2.74 | | | | | 100 |
| CL-37330-SPHR | 7000 | 3/4-10 | | 2.22 | | | | | | | | 3.76 | | | | | 100 |
| CL-37335-SPHR | 8000 | 7/8-9 | 1.25 | 2.35 | .75 | 1.28 | 6.88 | 1.75 | 5.00 | 3.13 | .31 | 3.63 | 4.34 | 1.62 | 7.40 | 6.15 | 160 |
| CL-37340-SPHR | 10000 | 1"-8 | | 2.47 | | 1.53 | | | | | | 3.51 | | | | | 230 |

D-RING TYPE (METRIC)

| PART NO. | LOAD RATING (kg) | A THREAD | THREAD PITCH (mm) | B (mm) | C (mm) | D (mm) | E (mm) | F (mm) | G (mm) | H (mm) | K DIA (mm) | L (mm) | M1 (mm) | M2 (mm) | N (mm) | O (mm) | P (mm) | INSTALLTION TORQUE (N-m) |
|----------------|------------------|----------|-------------------|--------|--------|--------|--------|--------|--------|--------|------------|--------|---------|---------|--------|--------|--------|--------------------------|
| CLM-37805-SPHR | 400 | M8 | 1.25 | 34 | | 14 | | | | | | 81 | | | | | | 9.5 |
| CLM-37810-SPHR | 450 | M10 | 1.5 | 36 | | 24 | | | | | | 79 | | | | | | 16 |
| CLM-37815-SPHR | 1050 | M12 | 1.75 | 38 | 13 | 39 | 130 | 37 | 99 | 56 | 6 | 77 | 87 | 32 | 139 | 117 | | 37 |
| CLM-37820-SPHR | 1900 | M16 | 2 | 42 | | 39 | | | | | | 73 | | | | | | 80 |
| CLM-37825-SPHR | 2200 | M20 | 2.5 | 46 | | 39 | | | | | | 69 | | | | | | 135 |
| CLM-37830-SPHR | 3000 | M20 | 2.5 | 57 | | 38 | | | | | | 94 | | | | | | 135 |
| CLM-37835-SPHR | 4200 | M24 | 3 | 61 | 19 | 43 | 175 | 44 | 127 | 79 | 8 | 90 | 110 | 41 | 188 | 156 | | 311 |

HEAVY-DUTY® SIDE-PULL HOIST RINGS

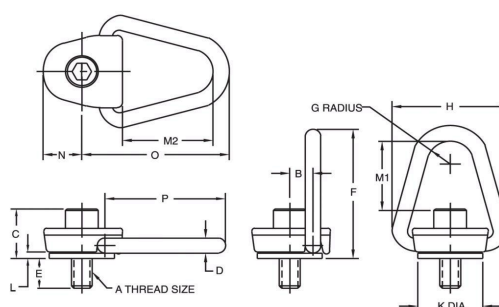
ALLOY STEEL, BLACK OXIDE FINISH, 100% MAGNAFLUX INSPECTED

2



Triangular-Ring Type

Heavy-Duty version of our Side-Pull Hoist Rings offers greater load capacity in a given mounting-thread size. Side-Pull Hoist Rings are ideal for side mounting. Flip and turn loads without unhooking (use with a spreader bar). Forged alloy-steel ring pivots and swivels 360 degrees simultaneously to allow lifting from any direction. Safety factor = 5:1. **Patent no. 6,267,422.** Fasten hoist ring using the installation torque specified in the dimension table. Always install so that the hoist ring can pivot and swivel freely. **INFO+** See general Hoist Ring Safety Precautions on page 71.



TRIANGULAR-RING TYPE (INCH)

| PART NO. | LOAD RATING (LBS) | A THREAD | B | C | D | E ±.12 | F | G | H | K DIA | L | M1 | M2 | N | O | P | INSTALLATION TORQUE (FT-LBS) |
|---------------|-------------------|----------|------|------|-----|--------|------|-----|------|-------|-----|------|------|------|------|------|------------------------------|
| CL-36305-SPHR | 800 | 5/16-18 | | 1.33 | | .48 | | | | | | 2.94 | | | | | 7 |
| CL-36310-SPHR | 1000 | 3/8-16 | | 1.4 | | | | | | | | 2.88 | | | | | 12 |
| CL-36315-SPHR | 2500 | 1/2-13 | .87 | 1.52 | .5 | .98 | 4.76 | .75 | 3.88 | 2.19 | .23 | 2.75 | 3.17 | 1.25 | 5.12 | 4.25 | 28 |
| CL-36320-SPHR | 4000 | 5/8-11 | | 1.65 | | | | | | | | 2.63 | | | | | 60 |
| CL-36325-SPHR | 5000 | 3/4-10 | | 1.77 | | 1.23 | | | | | | 2.5 | | | | | 100 |
| CL-36330-SPHR | 7000 | 3/4-10 | | 2.22 | | 1.28 | | | | | | 3.38 | | | | | 100 |
| CL-36335-SPHR | 8000 | 7/8-9 | 1.25 | 2.35 | .75 | 1.28 | 6.36 | .88 | 5.25 | 3.13 | .31 | 3.26 | 3.97 | 1.63 | 6.88 | 5.63 | 160 |
| CL-36340-SPHR | 10000 | 1-8 | | 2.47 | | 1.53 | | | | | | 3.13 | | | | | 230 |

TRIANGULAR-RING TYPE (METRIC)

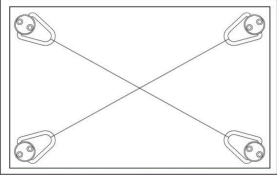
| PART NO. | LOAD RATING (kg) | A THREAD | THREAD PITCH (mm) | B (mm) | C (mm) | D (mm) | E ±3.0 (mm) | F (mm) | G (mm) | H (mm) | K DIA (mm) | L (mm) | M1 (mm) | M2 (mm) | N (mm) | O (mm) | P (mm) | INSTALLATION TORQUE (N-m) |
|----------------|------------------|----------|-------------------|--------|--------|--------|-------------|--------|--------|--------|------------|--------|---------|---------|--------|--------|--------|---------------------------|
| CLM-36805-SPHR | 400 | M8 | 1.25 | 34 | | | 14 | | | | | | 74 | | | | | 9.5 |
| CLM-36810-SPHR | 450 | M10 | 1.5 | 36 | | | 24 | | | | | | 72 | | | | | 16 |
| CLM-36815-SPHR | 1050 | M12 | 1.75 | 38 | | 13 | | 121 | 19 | 98 | 56 | 6 | 70 | 81 | 32 | 130 | 108 | 37 |
| CLM-36820-SPHR | 1900 | M16 | 2.0 | 42 | | | 39 | | | | | | 66 | | | | | 80 |
| CLM-36825-SPHR | 2200 | M20 | 2.5 | 46 | | | | | | | | | 62 | | | | | 135 |
| CLM-36830-SPHR | 3000 | M20 | 2.5 | 57 | | 19 | 38 | 161 | 22 | 133 | 79 | 8 | 85 | | | | | 135 |
| CLM-36835-SPHR | 4200 | M24 | 3.0 | 61 | | | 43 | | | | | | 81 | 101 | 41 | 175 | 143 | 311 |

PIVOTING HOIST RINGS

RING: FORGED 4130 STEEL, HEAT TREATED, BLACK OXIDE FINISH, 100% MAGNAFLUX INSPECTED PER ASTM E-1444
BASE: FORGED 1045 STEEL, BLACK OXIDE FINISH

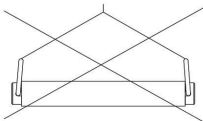


Economical hoist ring with a low profile and high load capacity. Forged base and solid-loop forged ring. Pivots a full 180 degrees, but does not rotate (install so that lifting force is applied in the pivoting direction). Safety factor = 5:1. Fasten hoist ring with grade-8 Socket-Head Cap Screws, using the installation torque specified in the dimension table. The smallest three sizes have two mounting holes, the largest two sizes have four. **INFO+**: See general Hoist Ring Safety Precautions on page 71.

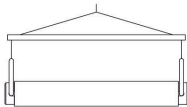


2

Install hoist rings so that lifting force is applied in the pivoting direction.



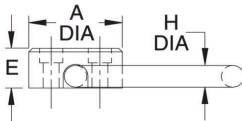
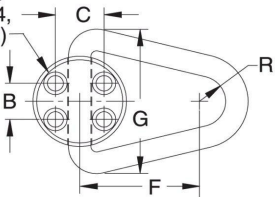
BAD



GOOD

Do not allow hoist rings to bind. Use a spreader bar, if necessary, to avoid binding.

FOR D SOCKET-HEAD
CAP SCREWS (2 OR 4,
DEPENDING ON SIZE)



| PART NO. | LOAD RATING (LBS) | A DIA | B | C | D THREAD X MIN. LENGTH | E DIA | F | G | H DIA | R | INSTALLATION TORQUE (FT-LBS) | SCREW EXTENSION BELOW BASE |
|-----------|-------------------|-------|-------|--------|---------------------------|-------|-------|--------|-------|-----|------------------------------|----------------------------|
| CL-20-HR | 2000 | 1-3/4 | - | 1 | 5/16-18x1.00 (or M8x25mm) | 3/4 | 2 | 2-1/2 | 5/16 | 1/2 | 4-7 | .58 (or 14mm) |
| CL-25-HR | 2500 | 2-1/4 | - | 1-1/8 | 3/8-16x1.25 (or M10x30mm) | 7/8 | 2-1/2 | 3-3/16 | 3/8 | 5/8 | 7-10 | .79 (or 18mm) |
| CL-50-HR | 5000 | 2-5/8 | - | 1-1/2 | 1/2-13x1.50 (or M12x40mm) | 1-1/8 | 3 | 3-7/8 | 1/2 | 3/4 | 20-25 | .90 (or 25mm) |
| CL-120-HR | 12000 | 3-1/8 | 1-1/4 | 1-5/8 | 1/2-13x1.75 (or M12x45mm) | 1-3/8 | 4 | 5 | 3/4 | 7/8 | 20-25 | .90 (or 23mm) |
| CL-200-HR | 20000 | 3-5/8 | 1-1/4 | 2-1/16 | 5/8-11x2.50 (or M16x65mm) | 1-7/8 | 5 | 6-3/16 | 1 | 1 | 42-50 | 1.25 (or 33mm) |